



Q1 2026

WisdomTree BioRevolution Fund (WDNA)



The Biology Revolution (“BioRevolution”)

Revolutionary advances across multiple fields including computer science, artificial intelligence, big data analytics, automation, chemistry, biology, and engineering are creating previously unimaginable new opportunities to re-engineer biological systems.

The revolution in our ability to read, understand, write and hack DNA, the genetic code of all life, will transform healthcare, agriculture, manufacturing, energy production, consumer services, and data storage.

Source: WisdomTree, Jamie Metzl from <https://www.newsweek.com/miraculous-mrna-vaccines-are-only-beginning-opinion-1567683>



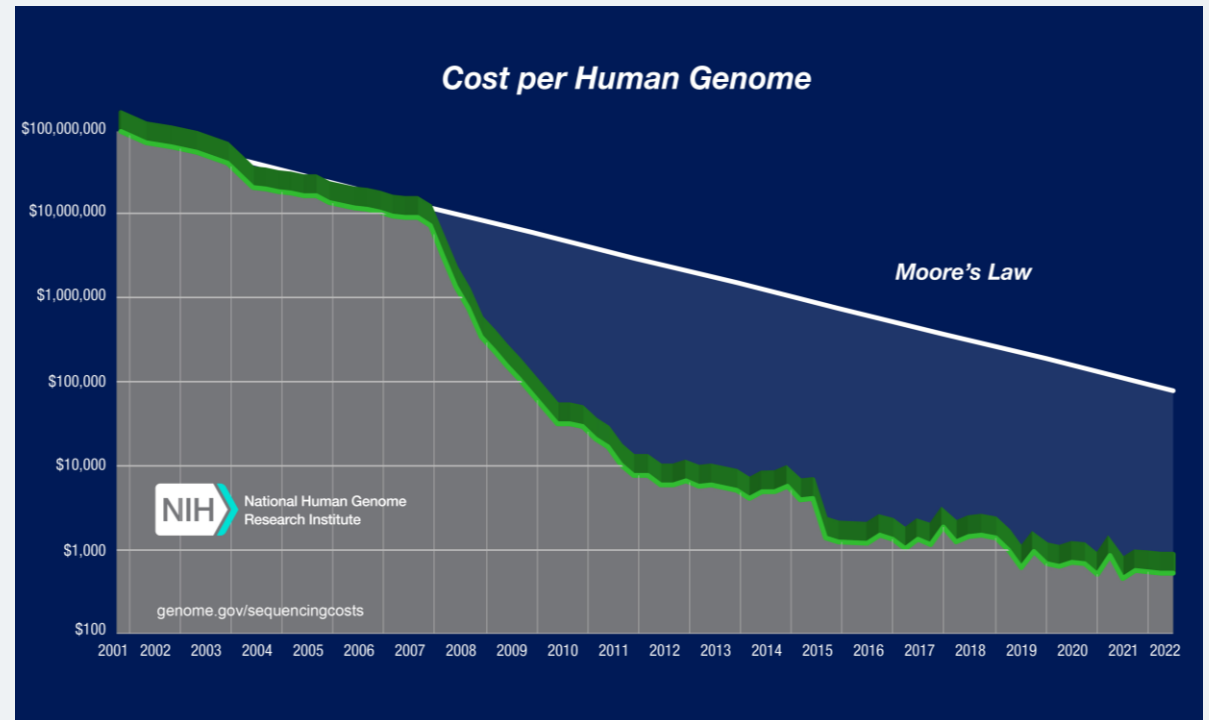
We're only a fifth of the way through the 21st century, but we've already sequenced the full human genome, figured out how to turn adult cells into stem cells, discovered ways to rewrite the genetic code of any living cell and brought down the cost of hacking genes by a factor of millions. If the 19th was the century of chemistry and the 20th that of physics, the 21st is the century of biology, in which we will aggressively reengineer biological systems to meet our needs.



Jamie Metzl

Genome Sequencing is Faster and Cheaper than Ever

- + DNA is made up of four chemical units, called nucleotide bases. The order of nucleotide bases determines the meaning of the information encoded in DNA.
- + A genome is an organism's complete set of DNA, which consists of approximately 3 billion DNA base pairs. Genome sequencing determines the exact order of the bases in a strand of DNA.
- + Coupled with the reduction in cost of sequencing, parallel advances in genome editing, artificial intelligence, and machine learning have helped us better understand complex biological systems.
- + Researchers can sequence DNA (determine the order and information carried in DNA) **more rapidly and cost-effectively than ever before**, which is driving the transformations in healthcare and many other sectors of our global economy.
- + The development of **Moderna's COVID-19 vaccine** is just one poignant example – it took the company **only two days to design the sequence for its mRNA vaccine!**



Source: WisdomTree, National Human Genome Research Institute.

Wetterstrand KA. DNA Sequencing Costs: Data from the NHGRI Genome Sequencing Program (GSP) Available at: www.genome.gov/sequencingcostsdata. Accessed January 29, 2024.

As of 3/31/2026 WTDNA held 4.5% of its weight in Moderna.

The Technologies Underpinning the BioRevolution are Connected and Reinforcing Advancements Across Interdisciplinary Fields



Human Health

The application of genetic technologies to prevent and treat disease will lead to significant enhancements to human health, well-being, and longevity.



Agriculture & Food

The genetics and biotechnology revolutions will increasingly transform agriculture, aquaculture, and food production, creating healthier and more sustainable models for feeding our growing population.



Materials, Chemicals, & Energy

Biological reengineering will be used to produce an increasing percentage of the physical inputs needed for manufacturing.



Biological Machines & Interfaces

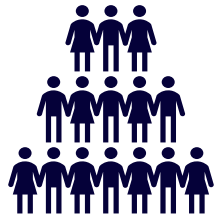
DNA has approximately one million times greater storage capacity than hard-disk storage.

Source: WisdomTree, Jamie Metzl

The BioRevolution Will Fundamentally Transform Healthcare



- + We expect our healthcare system to transition from **generalized medicine to personalized, or precision, healthcare based** on each person's individual biology.
- + The BioRevolution will **pave the way for predictive, preventative healthcare** that will help us live healthier and longer lives.



Generalized Medicine

- + Healthcare and treatments based on population averages.
- + Example: Taking the common prescribed blood thinner Warfarin is effective for most of the population, but for a small percentage of the population it causes negative, potentially fatal, side effects.



Precision Healthcare

- + Healthcare and treatments based on a person's individual biology to provide the right drug or treatment.
- + Example: Taking a blood thinning medication and dosage level that is prescribed based on how well it will work for your specific genetic makeup.

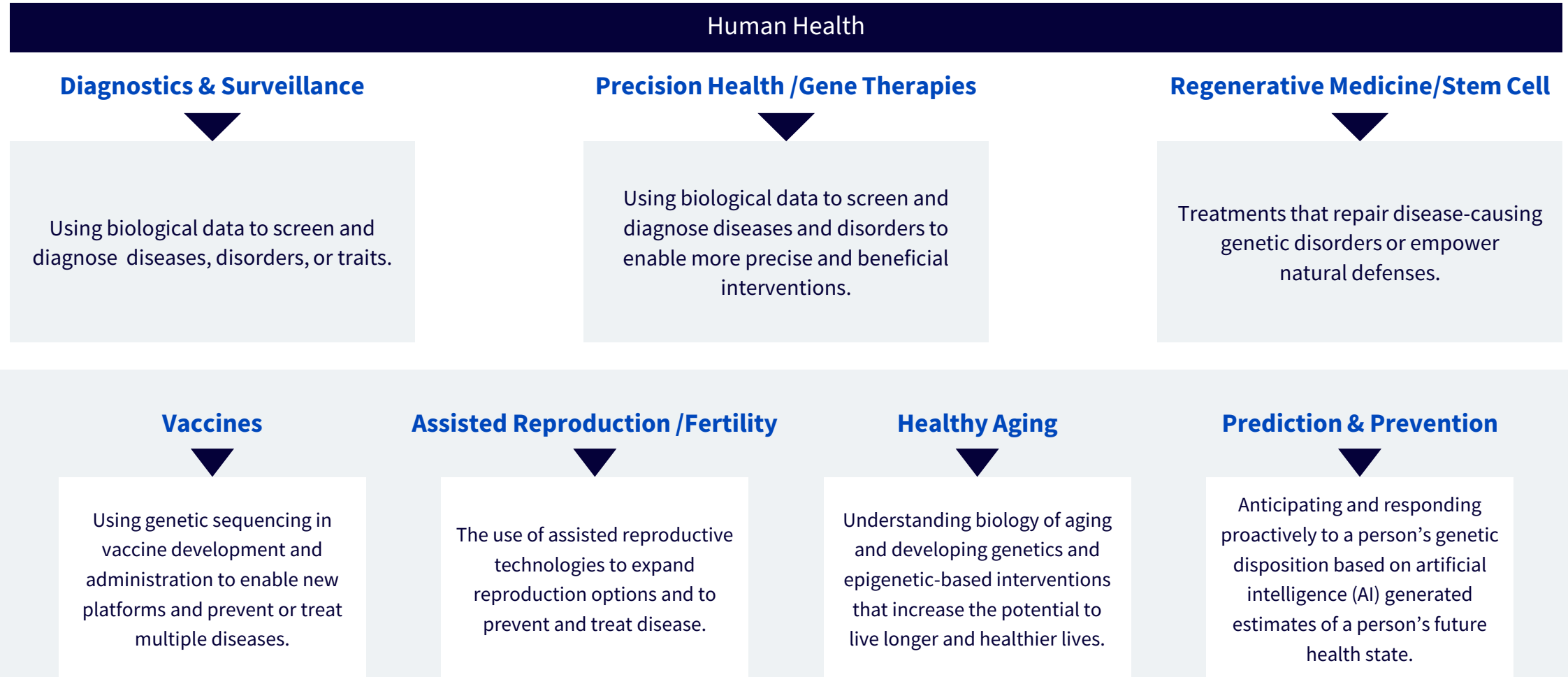


Predictive Healthcare

- + Anticipating and responding proactively to a person's genetic disposition based on artificial intelligence (AI) generated estimates of a person's future health state.
- + Example: Using AI to predict the genetic risk for a disease, disorder, or trait that may require a person to take blood thinning medication in the future, allowing the individual to take preventative measures early in life.

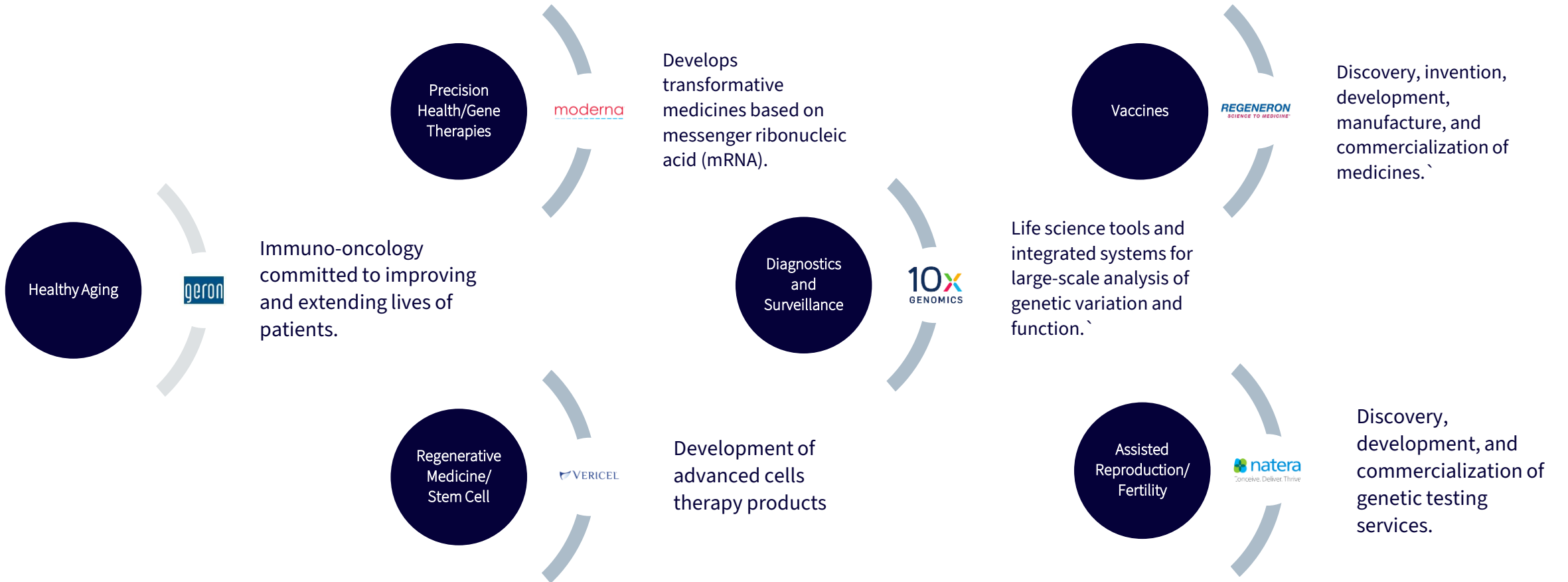
Source: WisdomTree, Jamie Metzl.

Many High-Profile Preliminary Applications of the BioRevolution Have Been Healthcare-Related



Source: WisdomTree, Jamie Metzl, National Institutes of Health

Human Health: Company Examples



Source: WisdomTree, Jamie Metzl, FactSet. As of 3/31/2026 the WisdomTree BioRevolution Index held 1.1%, 4.5%, 0.5%, 1.8% and 2.5% of its weight in Regeneron, Moderna, Geron, 10X Genomics and Natera, respectively. You cannot invest directly in an index.

The Applications of the Genetics and Biotechnology Revolutions Will Extend Far Beyond Healthcare



The same **intersection of biology and technology** that is transforming the healthcare sector, is also driving **transformations across many sectors and industry verticals of our global economy.** Although healthcare is the most mature market for these technologies, other sectors will catch up.

Agriculture & Food



Precision Agriculture

Genome-enabled management of crops and livestock that leads to increased productivity, greater ability to meet demand of a growing population, and increased sustainability



Plant-Based Meats

Vegetarian or vegan alternatives to traditional animal-based meats, derived from protein-rich seeds.



Cellular Agriculture

“...scientific advances in biology, biochemistry, and engineering that have led to the innovations enabling the growth of animal cells outside of the animal itself, in a controlled environment, for food.”¹

Materials, Chemicals, & Energy



Synthetic Manufacturing and Precision Fermentation:

Creating materials at scale by manipulating genetic code, rather than extracting them from nature.



Biofuels

“...genomics-based research leading to improved use of biomass and plant feedstocks for the production of fuels.”²

Biological Machines & Interfaces



Biological Machines & Interfaces:

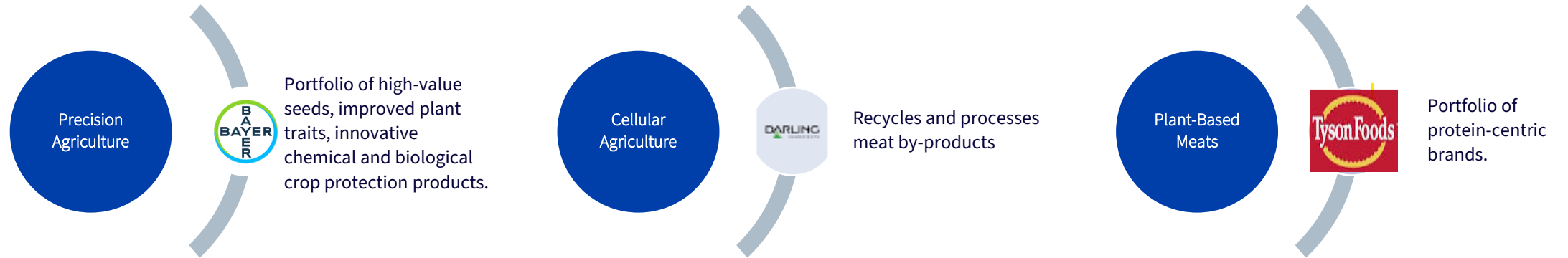
Connection and communication between the biology of humans and computers, including the usage of DNA for computing and storage.

Source: WisdomTree, Jamie MetzI, U.S. Food & Drug Administration, U.S. Department of Energy

1. <https://www.fda.gov/food/food-ingredients-packaging/food-made-cultured-animal-cells>

2. <https://genomicscience.energy.gov/research/DOEUSDA/index.shtml>

Agriculture and Food



Materials, Chemicals, and Energy



Source: WisdomTree, Jamie Metzl, FactSet. As of 3/31/2026 the WisdomTree BioRevolution Index held 1.0%, 1.7%, 0.4%, 1.0% and 2.3% of its weight in Bayer, Darling Ingredients, Tyson Foods, Verbio and Twist respectively. You cannot invest directly in an index.

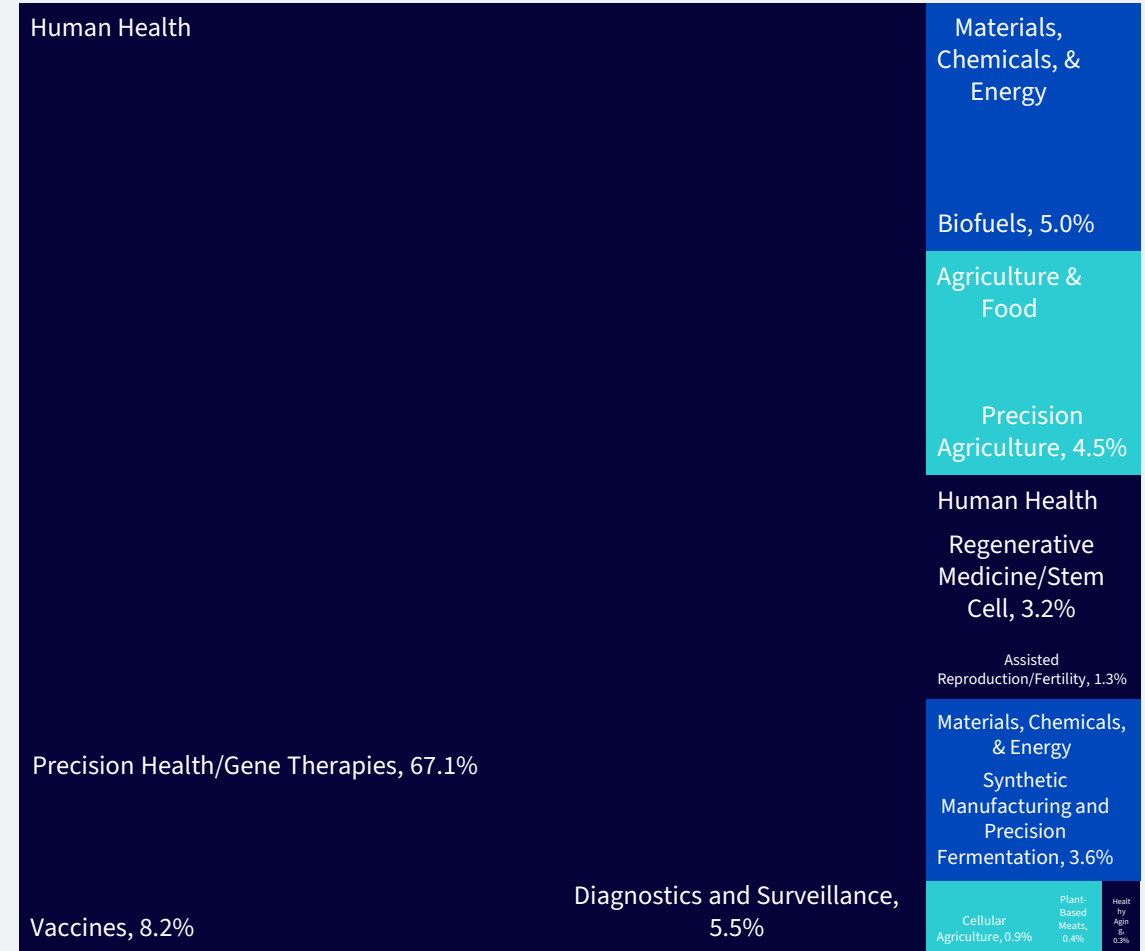
WDNA: Targeted Exposure Across BioRevolution Themes



- + The application of the genetics and biotechnology revolutions will extend far beyond healthcare, which is why ~ 14.4% of the WisdomTree BioRevolution Index (WDNA) is concentrated outside of Human Health.
- + We expect the maturation of the Agriculture & Food as well as the Materials, Chemicals, & Energy sectors to drive their increased representation in WDNA over time.

Sub Sector	Weight
Precision Health/Gene Therapies	67.11%
Vaccines	8.23%
Diagnostics and Surveillance	5.53%
Biofuels	4.99%
Precision Agriculture	4.50%
Synthetic Manufacturing and Precision Fermentation	3.65%
Regenerative Medicine/Stem Cell	3.24%
Assisted Reproduction/Fertility	1.27%
Cellular Agriculture	0.85%
Plant-Based Meats	0.37%
Healthy Aging	0.26%

WDNA - Sector and SubSector Exposures



Source: WisdomTree, Jamie Metzl as of 3/31/2026.

Companies that have exposure to multiple sectors or subsectors have their weight divided evenly across relevant exposures. Weights subject to change.

WDNA – Company Highlights

Illumina

- + World's leading sequencing company at the forefront of analytics and applications – combining humans and artificial intelligence to make sense of the genetic code
- + Spun out GRAIL, a company focusing on precision oncology
- + Created Illumina Ventures, an independently managed firm investing in early-stage companies pioneering the application of genetic technologies to healthcare, agriculture, and other sectors

Twist Bioscience

- + Leader in application of synthetic biology at scale
- + Provides synthetic DNA capacities across medicine, agriculture, industrial chemicals, and data storage
- + Partners with Bayer behind Joyn Bio, harnessing microbes (small organisms like bacteria, fungi, viruses) to increase agricultural yields

Moderna

- + Revolutionary mRNA platform provides opportunities well beyond COVID-19 vaccines, including potentially novel treatments for cancers, dementia, etc.

Bayer

- + Leading company in applying biotechnology tools, especially in healthcare and agriculture
- + Through billion dollar plus commitment to Leaps by Bayer, invests in paradigm-shifting advances in the life sciences

Source: WisdomTree. As of 3/31/2026 WDNA held 0.4%, 2.3%, 4.5% and 1.0% of its weight in Illumina, Twist Bioscience, Moderna, and Bayer, respectively.

Our Differentiated BioRevolution Investment Approach



- + WDNA seeks to track the price and yield performance, before fees and expenses, of the WisdomTree BioRevolution Index (WTDNA), which provides targeted exposure to companies that we believe will be leading the transformations and advancements in genetics and biotechnology.
 - **WisdomTree** leverages data from leading technology futurist Dr. Jamie Metzl as a third-party consultant.
 - **Jamie Metzl** is a well recognized thought leader on the biology revolution. He has authored Hacking Darwin: Genetic Engineering and the Future of Humanity and he serves as a member of the World Health Organization's expert committee on human genome editing.
- + Considering proprietary data from Dr. Metzl, WTDNA identifies the key sectors and industries verticals that are expected to be most significantly transformed by advances in biological science and technology, as well as the companies that WisdomTree believes are most representative of this wave of innovation.
- + The time horizon for commercial adoption of each BioRevolution application will vary, which is why we believe the **diverse portfolio** of companies captured in **WTDNA is the best way for investors to gain exposure to the BioRevolution megatrend**.
 - **Sector Diversification:** Our approach targets dynamic companies deploying revolutionary technologies both in and outside of Healthcare. We expect representation of non-healthcare companies to increase over time as these companies mature.
 - **Reduced Concentration Risk:** WTDNA will aim to invest in a wide-range of companies across the size and BioRevolution impact spectrums. The top 10 holdings currently account for approximately 27.9% of the index's total weight.¹

WisdomTree and Dr. Metzl share the view that the application of genetics and biotechnology will extend far beyond healthcare. In our shared view, the BioRevolution is creating a **historic investment opportunity equivalent to the industrial and internet revolutions.**

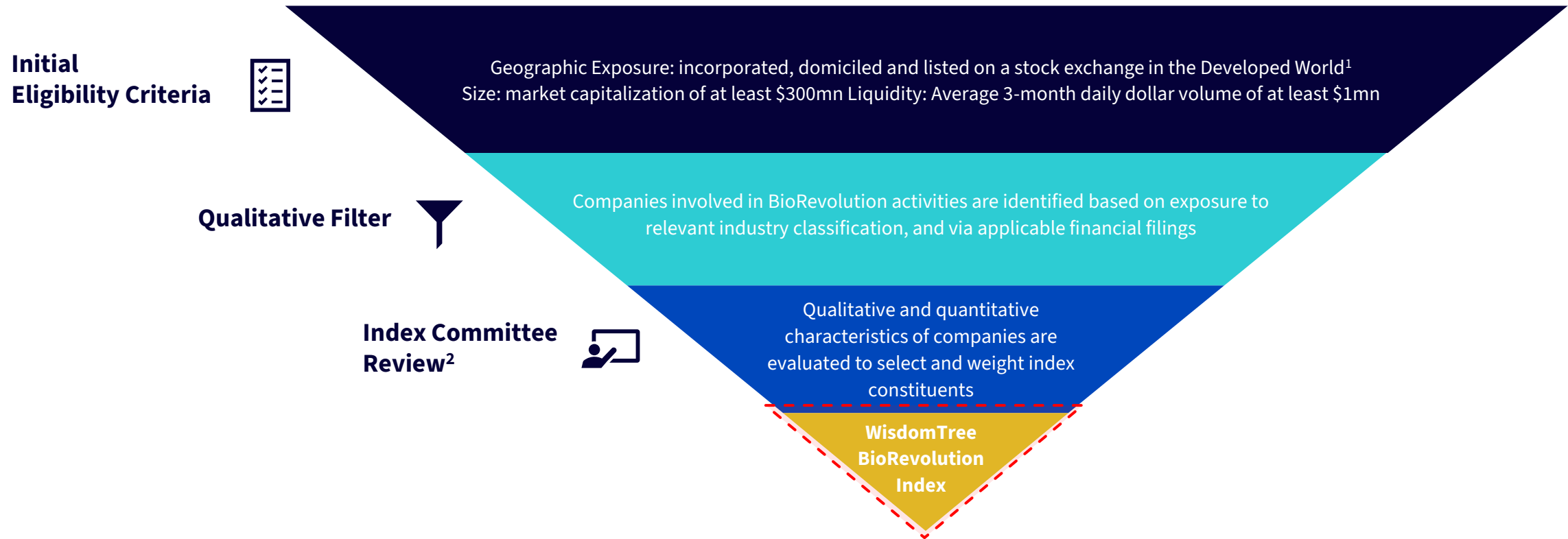
Source: WisdomTree, Jamie Metzl

1. As of 3/31/2026. Weights subject to change.

WisdomTree BioRevolution Index Methodology



+ A methodology merging qualitative and quantitative evaluations of eligible stocks to identify a portfolio of what we believe best-in-class companies working at the forefront of these biological breakthroughs.



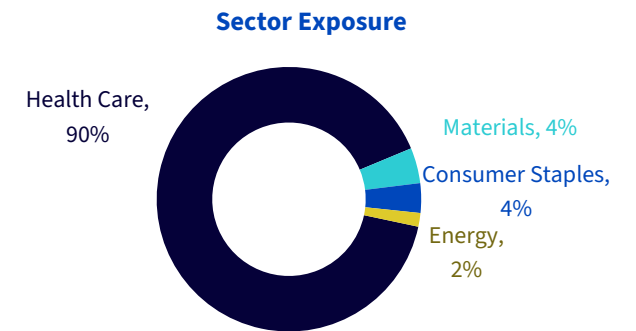
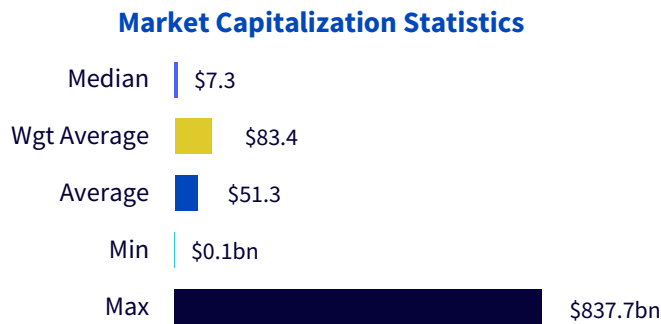
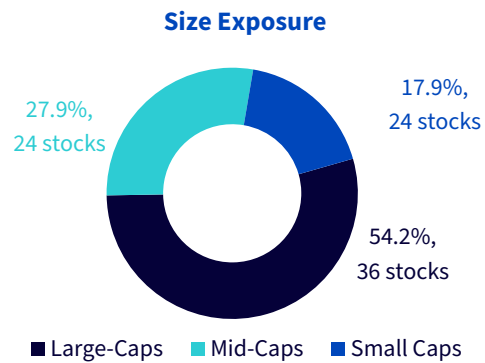
Source: WisdomTree. 1. Developed world stock exchanges in the U.S., Europe, Tokyo Stock Exchange or on stock exchanges in Australia, Israel, Hong Kong, Singapore, or Canada.

2. The Index is overseen by the WisdomTree BioRevolution Index Committee (the “Committee”), a standing index committee of WisdomTree, Inc. (“WisdomTree”), ticker WT. The Committee will be composed of not less than 3 members. The Committee is responsible for making broad decisions with respect to the implementation, ongoing management, operation and administration of the Index. The primary function of the Committee is to make sure the Index rules are implemented correctly and comprehensively, provided that the published Index composition shall be as determined by the Committee. The present summary is not exhaustive. Please refer to the Index methodology for further details. You cannot invest directly in an index.

WisdomTree BioRevolution Fund Characteristics



Top 10 Companies	Weight	Business Description	Sector	SubSector
Moderna, Inc.	4.5%	Researches, develops, manufactures and commercializes mRNA-based respiratory & other virus vaccines, oncology and rare disease therapeutics	Human Health	Vaccines
Johnson & Johnson	3.2%	Operates as an investment holding company with interests in health care products	Human Health	Vaccines
United Therapeutics Corporation	2.8%	Operates as a biotechnology company that develops and commercializes products to address the unmet medical needs of patients with chronic & life-threatening conditions	Human Health	Regenerative Medicine/Stem Cell
Pfizer Inc.	2.7%	Engages in discovery, development, manufacturing, marketing, sale and distribution of biopharmaceutical products & ingredients	Human Health	Vaccines
Eli Lilly and Company	2.6%	Manufactures, wholesales and markets pharmaceutical products	Human Health	Precision Health/Gene Therapies
Stoke Therapeutics, Inc.	2.5%	Operates as biotechnology company focused on the development of first-in-class therapeutics that selectively increase gene expression to treat genetic diseases	Human Health	Precision Health/Gene Therapies
Natera, Inc.	2.5%	Engages in development and commercialization of molecular testing and technology services in the fields of women's, oncology and organ health	Human Health	Assisted Reproduction/Fertility
Amgen Inc.	2.4%	Discovers, develops, manufactures and delivers human therapeutics	Human Health	Precision Health/Gene Therapies
Twist Bioscience Corp.	2.3%	Manufactures, distributes and sells synthetic DNA products through online	Materials, Chemicals, & Energy	Synthetic Manufacturing and Precision Fermentation
AstraZeneca PLC	2.3%	Manufactures pharmaceutical products	Human Health	Vaccines



Source: WisdomTree, FactSet. As of 3/31/2026. Small caps, mid caps, and large caps are companies with market value below \$2B, between \$2B and \$10B, and greater than \$10B USD, respectively.

WDNA – Competitor Landscape



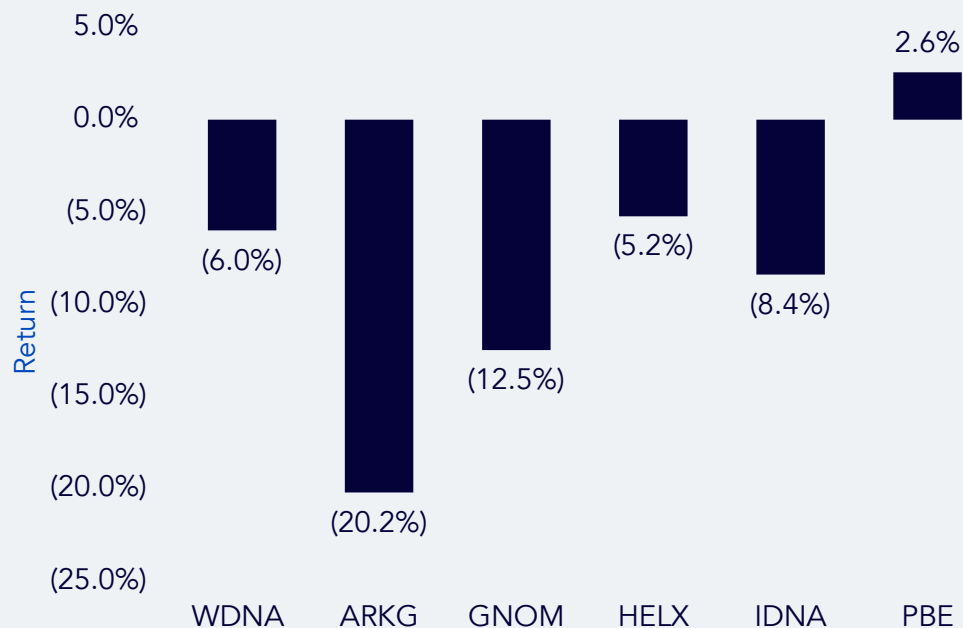
	WisdomTree BioRevolution Fund (WDNA)	Global X Genomics & Biotechnology ETF (GNOM)	Invesco Dynamic Biotechnology & Genome ETF (PBE)	Franklin Genomic Advancements ETF (HELX)	iShares Genomics Immunology & Healthcare ETF (IDNA)	ARK Genomic Revolution ETF (ARKG)
Expense Ratio	45bps	50bps	58bps	50bps	47bps	75bp
Number of Holdings	84	49	30	61	52	33
Weighting	Modified Equal Weight	Market Capitalization	Modified Equal Weight	N/A - Active ETF	Modified Market Capitalization	N/A - Active ETF
% Weight Outside Healthcare Sector	9.6%	0%	0%	6.4%	0.4%	1.1%
Stock Selection	<ul style="list-style-type: none"> + Identifies companies that will be significantly transformed by advancements in genetics and biotechnology, including, but not limited to, the applications within the Human Health, Agriculture & Food, Materials, Chemicals, and Energy, and Biological Machines and Interfaces sectors + Engagement in in BioRevolution activities determined via applicable language in financial reports and filings, as well as exposure to relevant industry classifications. 	<ul style="list-style-type: none"> + Natural language processing and using keywords that describe the index theme to identify companies with exposure to Genomics + Algorithm ranks companies according to frequency of specific keywords, and they are reviewed to ensure relevance. + Top 40 companies are selected 	<ul style="list-style-type: none"> + Selects biotechnology and genome companies using the Revere Hierarchy system, diving eligible companies into larger and smaller market capitalization subgroups. + Includes 30 stocks in the index. 8 top ranking companies by market capitalization from the larger sub-group assigned 40% weight; 22 top ranking companies by market capitalization assigned 60% weight 	<ul style="list-style-type: none"> + Selects companies using fundamental, "bottom-up" research and analysis that are enabling development of genomic advancements. 	<ul style="list-style-type: none"> + Selects companies deriving 50% or more of revenue from relevant FactSet Revere Business Industry Classifications System Level 6 industries. + Based on FactSet Supply Chain Relationships database counts the # of relationships each company has that mentions keywords related to Genomics and Immuno Biopharmaceutical products and technologies. Top 50 companies selected based on based on the number of keywords and the company's market capitalization. 	<ul style="list-style-type: none"> + Identifies companies using internal research and analysis to identify companies focused on extending and enhancing the quality of human and other life by incorporating technological and scientific developments, improvements and advancements in genomics into their business, such as by offering new products or services that rely on genomic sequencing, analysis, synthesis or instrumentation.
Rebalance & Reconstitution	Semi-annually	Semi-annually	Quarterly	N/A - Active ETF	Annually	N/A - Active ETF
Index	WisdomTree BioRevolution Index	Solactive Genomics Index	Dynamic Biotech & Genome Intellidex SM Index	N/A - Active ETF	NYSE FactSet Global Genomics and Immuno Biopharma Index	N/A - Active ETF

Source: WisdomTree, Global X, Invesco, iShares, Franklin Templeton, ARK Investments, FactSet. As of 3/31/2026. The exchange-traded funds (ETFs) listed share a common focus on the biotechnology and genomics sectors.

Competitor Landscape vs. WDNA



WDNA Competitor Performance (6/3/2021 - 3/31/2026)



Performance is historical and does not guarantee future results. Current performance may be lower or higher than quoted. Investment returns and principal value of an investment will fluctuate so that an investor's shares, when redeemed, may be worth more or less than their original cost. Please see page 17 for standardized performance data for funds referenced.

Source: WisdomTree, Global X, Invesco, iShares, Franklin Templeton, ARK Investments, FactSet as of 3/31/2026. The graphs above represent a comparison between selected competitor funds and the WisdomTree BioRevolution Fund.

Overlap Analysis

Overlap Counts

	WDNA	PBE	ARKG	GNOM	IDNA	HELX
WDNA		16	16	31	17	26
PBE	17.99%		4	9	3	11
ARKG	19.33%	11.81%		16	6	14
GNOM	36.04%	24.04%	31.58%		10	20
IDNA	21.65%	10.07%	6.55%	20.14%		6
HELX	31.61%	19.94%	23.80%	31.00%	10.58%	

Performance for the period 06/03/2021-3/31/2026 was selected based on the 6/3/2021 inception date of WDNA. ETF performance at NAV.

Appendix: Standardized Performance



Average Annual Returns as of 3/31/2026

Fund	YTD	1 Year	3 Year	5 Year	10 Year	Since Inception
WisdomTree BioRevolution Fund (NAV)	2.96%	41.99%	2.48%	N/A	N/A	-6.01%
WisdomTree BioRevolution Fund (Market Price)	2.96%	41.41%	2.41%	N/A	N/A	-6.03%
ARK Genomic Revolution ETF (NAV)	-8.57%	27.42%	-4.17%	-21.36%	5.03%	-20.22%
ARK Genomic Revolution ETF (Market Price)	-8.80%	27.27%	-4.22%	-21.42%	4.99%	-20.23%
Global X Genomics & Biotechnology ETF (NAV)	-3.93%	38.11%	-3.37%	-13.12%	N/A	-12.50%
Global X Genomics & Biotechnology ETF (Market Price)	-3.78%	39.47%	-3.45%	-13.18%	N/A	-12.53%
Franklin Genomic Advancements ETF (NAV)	-9.07%	22.84%	2.91%	-5.15%	N/A	-5.23%
Franklin Genomic Advancements ETF (Market Price)	-8.98%	22.89%	2.98%	-5.16%	N/A	-5.20%
iShares Genomics Immunology & Healthcare ETF (NAV)	10.31%	43.06%	8.56%	-7.92%	N/A	-8.40%
iShares Genomics Immunology & Healthcare ETF (Market Price)	10.92%	43.66%	8.87%	-7.84%	N/A	-8.30%
Invesco Dynamic Biotechnology & Genome ETF (NAV)	-3.38%	26.21%	8.51%	1.69%	7.79%	2.58%
Invesco Dynamic Biotechnology & Genome ETF (Market Price)	-3.37%	26.24%	8.52%	1.68%	7.80%	2.54%

Fund Details

Name	Ticker	Inception Date	Expense Ratio
WisdomTree BioRevolution Fund	WDNA	6/3/2021	0.45%
ARK Genomic Revolution ETF	ARKG	10/31/2014	0.75%
Global X Genomics & Biotechnology ETF	GNOM	4/5/2019	0.50%
Franklin Genomic Advancements ETF	HELX	2/25/2020	0.50%
iShares Genomics Immunology & Healthcare ETF	IDNA	6/11/2019	0.47%
Invesco Dynamic Biotechnology & Genome ETF	PBE	6/23/2005	0.58%

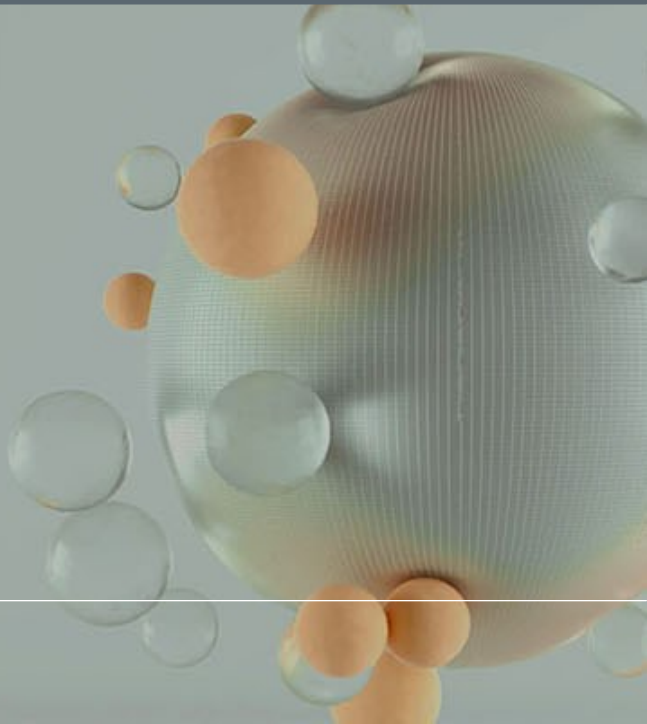
Source: WisdomTree, Global X, Invesco, iShares, Franklin Templeton, ARK Investments, FactSet, Bloomberg. Since inception period: 6/3/2021-3/31/2026.

Performance is historical and does not guarantee future results. Current performance may be lower or higher than quoted. Investment returns and principal value of an investment will fluctuate so that an investor's shares, when redeemed, may be worth more or less than their original cost. Performance data for the most recent month-end is available by visiting the respective Funds' website: WisdomTree at www.wisdomtree.com/investments, ARK Investments at www.ark-funds.com, Global X at www.globalxetfs.com, Franklin Templeton at www.franklintempleton.com, iShares at www.ishares.com/us, Invesco at www.invesco.com. For more important information see pages 18-23.

WisdomTree shares are bought and sold at market price (not NAV) and are not individually redeemed from the Fund. Total Returns are calculated using the daily 4:00pm EST net asset value (NAV). Market price returns reflect the midpoint of the bid/ask spread as of the close of trading on the exchange where Fund shares are listed. Market price returns do not represent the returns you would receive if you traded shares at other times.

Additional WDNA Information

- + **Ticker:** WDNA
- + **Exchange:** CBOE
- + **Expense Ratio:** 45bps
- + **Structure:** Open-ended ETF
- + **Exposure:** Companies that may be significantly transformed by advancements in genetics and biotechnology over the medium- to long-term.
- + **Equity Rebalancing:** Semi-annually in April and October



WDNA Important Information



Please see the [WisdomTree Glossary](#) for definitions of terms.

Investors should carefully consider the investment objectives, risks, charges and expenses of the Fund before investing. For a prospectus or, if available, the summary prospectus containing this and other important information about the fund, call 866.909.9473 or visit WisdomTree.com/investments. Read the prospectus or, if available, the summary prospectus carefully before investing.

Statements concerning trends in the fields, industries and sectors discussed are based on current conditions, which will fluctuate. References to specific securities and their issuers are for illustrative purposes only and are not intended to be, and should not be interpreted as, recommendations to purchase or sell such securities. This material represents an assessment of trends discussed at a specific time and is not intended to be a forecast of future events or a guarantee of future results. This material should not be relied upon as research or investment advice regarding any security in particular. The user of this information assumes the entire risk of any use made of the information provided herein.

There are risks associated with investing, including possible loss of principal. The Fund invests in BioRevolution companies, which are companies significantly transformed by advancements in genetics and biotechnology. BioRevolution companies face intense competition and potentially rapid product obsolescence. These companies may be adversely affected by the loss or impairment of intellectual property rights and other proprietary information or changes in government regulations or policies. Additionally, BioRevolution companies may be subject to risks associated with genetic analysis. The Fund invests in the securities included in, or representative of, its Index regardless of their investment merit and the Fund does not attempt to outperform its Index. The composition of the Index is governed by an Index Committee and the Index may not perform as intended. Please read the Fund's prospectus for specific details regarding the Fund's risk profile.

WisdomTree Funds are distributed by Foreside Fund Services, LLC in the U.S.

Competitor Important Information



The purpose of this material is to provide investors with a means to evaluate the investment methodology of WTDNA and some of its competitor funds. It is the opinion of WisdomTree that all funds are managed differently and do not react the same to economic or market events. The investment objectives, strategies, policies or restrictions of other funds may differ and more information can be found in their respective prospectuses. Therefore, we generally do not believe it is possible to make direct fund-to-fund comparisons in an effort to highlight the benefits of a fund versus another similarly managed fund. The information included in this material is based upon data obtained from sources believed to be accurate. This material is not considered as an offer to sell or a solicitation to buy shares of any other funds mentioned herein.

Global X Genomics & Biotechnology ETF (GNOM): Investing involves risk, including the possible loss of principal. The investable universe of companies in which GNOM may invest may be limited. The Fund invests in securities of companies engaged in Genomics, Healthcare and Biotechnology sectors. These sectors can be affected by government regulations, rapid product obsolescence, intense industry competition and loss or impairment of patents or intellectual property rights. International investments may involve risk of capital loss from unfavorable fluctuation in currency values, from differences in generally accepted accounting principles or from social, economic or political instability in other nations. GNOM is non-diversified.

Global X Management Company LLC serves as an advisor to Global X Funds. The Funds are distributed by SEI Investments Distribution Co. (SIDCO), which is not affiliated with Global X Management Company LLC or Mirae Asset Global Investments. Global X Funds are not sponsored, endorsed, issued, sold or promoted by Solactive AG, nor does Solactive AG make any representations regarding the advisability of investing in the Global X Funds. Neither SIDCO, Global X nor Mirae Asset Global Investments are affiliated with Solactive AG.

For prospectus, visit: <https://www.globalxetfs.com/>

Competitor Important Information



Invesco Dynamic Biotechnology & Genome ETF (PBE): There are risks involved with investing in ETFs, including possible loss of money. Shares are not actively managed and are subject to risks similar to those of stocks, including those regarding short selling and margin maintenance requirements. Ordinary brokerage commissions apply. The Fund's return may not match the return of the Underlying Index. The Fund is subject to certain other risks. Please see the current prospectus for more information regarding the risk associated with an investment in the Fund.

Stocks of small and mid-sized companies tend to be more vulnerable to adverse developments, may be more volatile, and may be illiquid or restricted as to resale. The Fund may engage in frequent trading of its portfolio securities in connection with the rebalancing or adjustment of the Underlying Index. Investments focused in a particular industry, such as biotechnology, are subject to greater risk, and are more greatly impacted by market volatility, than more diversified investments.

The Fund is non-diversified and may experience greater volatility than a more diversified investment.

Invesco Distributors, Inc., is the US distributor for Invesco Ltd.'s Retail Products and Collective Trust Funds.

For prospectus, visit: <https://www.invesco.com/us>

Competitor Important Information



Franklin Genomic Advancements ETF (HELX): All investments involve risks, including possible loss of principal. Stock prices fluctuate, sometimes rapidly and dramatically, due to factors affecting individual companies, particular industries or sectors, or general market conditions. The fund's investment strategies incorporate the identification of thematic investment opportunities, and its performance may be negatively impacted if the investment manager does not correctly identify such opportunities or if the theme develops in an unexpected manner. By focusing its investments in health care related industries, the fund carries much greater risks of adverse developments and price movements in such industries than a fund that invests in a wider variety of industries. Companies operating within health care related industries face intense competition and potentially rapid product obsolescence. These companies are also heavily dependent on intellectual property rights and may be adversely affected by loss or impairment of those rights. These companies typically engage in significant amounts of spending on research and development, and there is no guarantee that the products or services produced by these companies will be successful, or that competitors will not develop technology that is substantially similar or superior to such companies' technology. The field of genomic science could face increasing regulatory scrutiny in the future, which may limit the development of this technology and impede the growth of companies that develop and/or utilize this technology. Special risks are associated with foreign investing, including currency fluctuations, economic instability and political developments. As a non-diversified fund, the fund may invest in a relatively small number of issuers which may negatively impact the fund's performance and result in greater fluctuation in the value of the fund's shares. These and other risks are discussed in the Fund's prospectus.

Franklin Templeton Distributors, Inc.

For prospectus, visit: <https://www.franklintempleton.com/>

iShares Genomics Immunology & Healthcare ETF (IDNA): International investing involves risks, including risks related to foreign currency, limited liquidity, less government regulation and the possibility of substantial volatility due to adverse political, economic or other developments. These risks often are heightened for investments in emerging/developing markets and in concentrations of single countries. Funds that concentrate investments in specific industries, sectors, markets or asset classes may under-perform or be more volatile than other industries, sectors, markets or asset classes than the general securities market. Companies in the healthcare sector may be affected by government regulations and programs, changes in the cost of medical products and services, changes in the demand for medical products and services among other factors. Healthcare companies are subject to competitive forces that may result in product obsolescence.

Competitor Important Information



The strategies discussed are strictly for illustrative and educational purposes and are not a recommendation, offer or solicitation to buy or sell any securities or to adopt any investment strategy. There is no guarantee that any strategies discussed will be effective.

The iShares Funds are distributed by BlackRock Investments, LLC (together with its affiliates, “BlackRock”)

For prospectus, visit: <https://www.ishares.com/us>

ARK Genomic Revolution ETF (ARKG): The principal risks of investing in ARKG: Equity Securities Risk. The value of the equity securities the Fund holds may fall due to general market and economic conditions. Health Care Sector Risk. The health care sector may be adversely affected by government regulations and government health care programs, restrictions on government reimbursements for medical expenses, increases or decreases in the cost of medical products and services and product liability claims, among other factors. Many health care companies are heavily dependent on patent protection and intellectual property rights and the expiration of a patent may adversely affect their profitability. Biotechnology Company Risk. A biotechnology company’s valuation can often be based largely on the potential or actual performance of a limited number of products and can accordingly be greatly affected if one of its products proves, among other things, unsafe, ineffective or unprofitable. Biotechnology companies are subject to regulation by, and the restrictions of, the U.S. Food and Drug Administration, the U.S. Environmental Protection Agency, state and local governments, and foreign regulatory authorities. Pharmaceutical Company Risk. Companies in the pharmaceutical industry can be significantly affected by, among other things, government approval of products and services, government regulation and reimbursement rates, product liability claims, patent expirations and protection and intense competition. Detailed information regarding the specific risks of ARKG can be found in the ETF’s prospectus. Additional risks of investing in ARKG include Foreign Securities Risk, Information Technology Sector Risk, equity, market, management and non-diversification risks.

ARK Investment Management LLC is the investment adviser to the ARK ETFs. Foreside Fund Services, LLC, distributor.

For prospectus, visit: <https://ark-funds.com/>