

# WisdomTree Tech Megatrends UCITS ETF



WisdomTree.eu  
+44 (0) 207 448 4330

# WisdomTree Tech Megatrends UCITS ETF

The WisdomTree Tech Megatrends UCITS ETF (TMGT) seeks to tap into the long-term growth potential of world-changing technologies, offering differentiated, long-term capital appreciation. It draws on WisdomTree's thematic research and experience to deliver a technology focused multi-thematic strategy.

## **Investing in the future of technology**

Technology is reshaping our world at an accelerating pace. For investors, this offers opportunities to invest in companies that will be the driving force behind technologies shaping our future, such as artificial intelligence, quantum computing and biotech.

Technology themes offer investors the potential to capture above-average growth and gain early exposure to the companies that may become tomorrow's mega caps. While identifying the right themes and stocks can be challenging, a multi-thematic strategy focused solely on technology helps simplify the journey, delivering broad exposure while removing the need to make complex allocation and stock-selection decisions.

## **A differentiated exposure to high-growth tech themes**

WisdomTree is a leading thematic exchange-traded fund provider with deep thematic research expertise. Since 2018, we have developed world-class research into the construction of single-theme strategies and thematic portfolios, and launched multiple successful, expert-driven thematic strategies. This work underpins a research-driven investment process for managing multi-thematic strategies, including our Megatrends Range. The WisdomTree Tech Megatrends UCITS ETF

builds on this process, focusing exclusively on technology-linked themes.

Our multi-thematic investment process is designed to deliver long-term growth and early exposure to the potential mega-caps of tomorrow by combining the strengths of passive and active approaches. Ultimately, the success of a thematic investment may depend on how effectively the underlying strategy identifies and evolves with future leaders in the space and we believe our approach to access the Tech Megatrends theme is well positioned to capture that future growth. Unlike purely passive strategies, we partner with specialist thematic experts for stock selection, enabling targeted exposure to the most relevant companies within each theme. At the same time, unlike fully active strategies, the portfolio applies a disciplined, tactical, top-down allocation across themes, while maintaining diversified exposure to pure-play companies.

### WisdomTree Tech Megatrends UCITS ETF: 3 layers of Alpha generation

In line with our thematic research, the **WisdomTree Tech Megatrends UCITS ETF** is built around 3 layers of alpha generation:

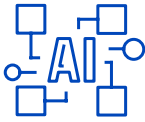
01	02	03
<p>The first layer is our <b>strategic thematic asset allocation</b> that provides investors with a curated exposure to the most promising tech themes while maximising diversification between them.</p>	<p>The second layer is our <b>tactical thematic asset allocation</b> that allows the strategy to lean in and overweight themes when a combination of positive factors creates a virtuous cycle for a given theme, as observed with Cloud during the 2020 COVID period or AI in 2023.</p>	<p>The third layer is <b>thematic stock selection</b>, where different theme experts help us pick the most relevant up-and-coming companies for each theme. In our multi-thematic strategy, we leverage our different thematic partners to deliver the best portfolio of stocks for each theme.</p>

## WisdomTree strategic thematic allocation

WisdomTree's strategic thematic asset allocation annually selects the most relevant themes from the Technological Shifts cluster within its Thematic Classification, focusing on high-conviction opportunities with significant market size, growth potential and a robust investable universe.

---

### Technological Shifts



**Artificial Intelligence & Big Data**



**Blockchain**



**Cloud Computing**



**Cybersecurity**



**Digital Infrastructure**



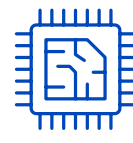
**HealthTech**



**Quantum Computing**



**Rise of China Tech**



**Semiconductors**

The full methodology document that includes all relevant index details is available on the WisdomTree website.

## WisdomTree ESG framework

WisdomTree understands the importance of Environmental, Social and Governance (ESG) considerations within investment strategies and strongly believes that ESG principles need to be addressed holistically and not simply applied to a subset of impact investments. We have aligned our proprietary equity indices with ESG factors using exclusion criteria, applying a combination of principle-based exclusions and activity-based exclusions based on the assessment from Sustainalytics, a leading independent ESG and corporate governance research, ratings and analytics firm.

For information on our approach to ESG, visit our [responsible investing page](#).

## Why WisdomTree Tech Megatrends UCITS ETF?

- + **Thoughtful strategy design:** a curated basket of technology-focused investment themes with high diversification potential and alignment with structural trends that can boost the growth potential of your portfolio.
- + **Guided by experts:** Benefit from an expert-driven selection of up-and-coming, pure play companies in each theme.
- + **Adaptive theme allocation:** Profit from agile, tactical allocation between themes to adapt to current market environments.
- + **Enhanced diversification approach:** A strategy designed with low overlap to market indices and established mega caps.

The WisdomTree Tech Megatrends UCITS ETF stands as a strong alternative to other technology-focused strategies and indices as well as traditional growth funds as it delivers exposure to a diversified basket of growing, up-and-coming companies instead of established tech mega caps.

---

### Fund Information: WisdomTree Tech Megatrends UCITS ETF

Ticker	Exchange	ISIN	Bloomberg Code	Listing Currency	Base Currency	TER%
TMGT	LSE	IE0007Z28IJ7	TMGT LN	USD	USD	0.50%
TMGG	LSE	IE0007Z28IJ7	TMGG LN	GBx	USD	0.50%
TMGT	Borsa Italiana	IE0007Z28IJ7	TMGT IM	EUR	USD	0.50%
WTMT	XETRA	IE0007Z28IJ7	WTMT GY	EUR	USD	0.50%
TMGT	SIX	IE0007Z28IJ7	TMGT SW	USD	USD	0.50%
TMGT	Paris	IE0007Z28IJ7	TMGT FP	EUR	USD	0.50%

TER: Total Expense Ratio

## Important Information

**Marketing communications issued in the European Economic Area (“EEA”):** This document has been issued and approved by WisdomTree Ireland Limited, which is authorised and regulated by the Central Bank of Ireland.

**Marketing communications issued in jurisdictions outside of the EEA:** This document has been issued and approved by WisdomTree UK Limited, which is authorised and regulated by the United Kingdom Financial Conduct Authority.

WisdomTree Ireland Limited and WisdomTree UK Limited are each referred to as “WisdomTree” (as applicable). Our Conflicts of Interest Policy and Inventory are available on request.

**This marketing communication has been prepared for professional investors, but the WisdomTree products set out in this document may be available in some jurisdictions to any investors, subject to applicable laws and regulations. As the product may not be authorised or its offering may be restricted in your jurisdiction, it is the responsibility of every person or entity to satisfy themselves as to the full observance of the laws and regulations of the relevant jurisdiction. Prior to any application investors are advised to take all necessary legal, regulatory, tax and investment advice on the suitability and consequences of an investment in the products. Past performance is not a reliable indicator of future performance. Any historical performance included in this document may be based on back testing. Back testing is the process of evaluating an investment strategy by applying it to historical data to simulate what the performance of such strategy would have been. Back tested performance is purely hypothetical and is provided in this document solely for informational purposes. Back tested data does not represent actual performance and should not be interpreted as an indication of actual or future performance. The value of any investment may be affected by exchange rate movements. Any decision to invest should be based on the information contained in the appropriate prospectus and after seeking independent investment, tax and legal advice. These products may not be available in your market or suitable for you. The content of this document does not constitute investment advice nor an offer for sale nor a solicitation of an offer to buy any product or make any investment.**

An investment in exchange-traded products (“ETPs”) is dependent on the performance of the underlying index, less costs, but it is not expected to match that performance precisely. ETPs involve numerous risks including among others, general market risks relating to the relevant underlying index, credit risks on the provider of index swaps utilised in the ETP, exchange rate risks, interest rate risks, inflationary risks, liquidity risks and legal and regulatory risks.

The information contained in this document is not, and under no circumstances is to be construed as, an advertisement or any other step in furtherance of a public offering of shares in the United States or any province or territory thereof, where none of the issuers or their products are authorised or registered for distribution and where no prospectus of any of the issuers has

been filed with any securities commission or regulatory authority. No document or information in this document should be taken, transmitted or distributed (directly or indirectly) into the United States. None of the issuers, nor any securities issued by them, have been or will be registered under the United States Securities Act of 1933 or the Investment Company Act of 1940 or qualified under any applicable state securities statutes.

This document may contain independent market commentary prepared by WisdomTree based on publicly available information. Although WisdomTree endeavours to ensure the accuracy of the content in this document, WisdomTree does not warrant or guarantee its accuracy or correctness. Any third party data providers used to source the information in this document make no warranties or representation of any kind relating to such data. Where WisdomTree has expressed its own opinions related to product or market activity, these views may change. Neither WisdomTree, nor any affiliate, nor any of their respective officers, directors, partners, or employees accepts any liability whatsoever for any direct or consequential loss arising from any use of this document or its contents.

This document may contain forward looking statements including statements regarding our belief or current expectations with regards to the performance of certain assets classes and/or sectors. Forward looking statements are subject to certain risks, uncertainties and assumptions. There can be no assurance that such statements will be accurate and actual results could differ materially from those anticipated in such statements. WisdomTree strongly recommends that you do not place undue reliance on these forward-looking statements.

### **WisdomTree Issuer ICAV**

The products discussed in this document are issued by WisdomTree Issuer ICAV (“WT Issuer”). WT Issuer is an umbrella investment company with variable capital having segregated liability between its funds organised under the laws of Ireland as an Irish Collective Asset-management Vehicle and authorised by the Central Bank of Ireland (“CBI”). WT Issuer is organised as an Undertaking for Collective Investment in Transferable Securities (“UCITS”) under the laws of Ireland and shall issue a separate class of shares (“Shares”) representing each fund.

The Fund is described in a Key Information Document (KID) or Key Investor Information Document (KIID) for UK investors, and the prospectus of WT Issuer (“WT Prospectus”). A copy of the WT Prospectus and the KID / KIID is available, for EEA/UK only, in English at [www.wisdomtree.eu](http://www.wisdomtree.eu). Where required under national rules, the KID will also be available in the local language of the relevant EEA Member State. Investors should read the WT Prospectus before investing and should refer to the section of the WT Prospectus entitled ‘Risk Factors’ for further details of risks associated with an investment in the Shares.

The summary of investor rights associated with an investment in the fund is available in English on WisdomTree Europe’s website. WisdomTree Management Limited may decide to terminate the arrangements made for the marketing of its collective investment undertakings. In such circumstances, shareholders in the affected EEA Member State will be notified of this decision and will be provided with the opportunity to redeem their shareholding in the fund free of any

charges or deductions for at least 30 working days from the date of such notification.

**For Investors in Switzerland:**

This document constitutes an advertisement of the financial product(s) mentioned herein.

The prospectus (in English only) and the key investor information documents (KID) (in German, French and Italian) are available from WisdomTree's website: <https://www.wisdomtree.eu/en-ch/resource-library/prospectus-and-regulatory-reports>

For WisdomTree UCITS products only: the representative and paying agent of the ETPs in Switzerland is Société Générale Paris, Zurich Branch, Talacker 50, PO Box 5070, 8021 Zurich, Switzerland. The prospectus, the key investor information documents (KIID), the articles of association and the annual and semi-annual reports of the sub-funds are available free of charge from the representative and paying agent. As regards distribution in Switzerland, the place of jurisdiction and performance is at the registered seat of the representative and paying agent. Some of the sub-funds referred to in this document may not have been registered with the Swiss Financial Market Supervisory Authority ("FINMA"). In Switzerland, such sub-funds that have not been registered with FINMA may only be available to Qualified Investors.

**For Investors in France:**

The information in this document is intended exclusively for professional investors (as defined under the MiFID) investing for their own account and this material may not in any way be distributed to the public. The distribution of the Prospectus and the offering, sale and delivery of Shares in other jurisdictions may be restricted by law. WT Issuer is a UCITS governed by Irish legislation, and approved by the Financial Regulatory as UCITS compliant with European regulations although may not have to comply with the same rules as those applicable to a similar product approved in France. The Fund has been registered for marketing in France by the Financial Markets Authority (Autorité des Marchés Financiers) and may be distributed to investors in France. Copies of all documents (i.e. the Prospectus, the Key Investor Information Document, any supplements or addenda thereto, the latest annual reports and the memorandum of incorporation and articles of association) are available in France, free of charge at the French centralizing agent, Societe Generale at 29, Boulevard Haussmann, 75009, Paris, France. Any subscription for Shares of the Fund will be made on the basis of the terms of the prospectus and any supplements or addenda thereto.

**For Investors in Malta:** This document does not constitute or form part of any offer or invitation to the public to subscribe for or purchase shares in the Fund and shall not be construed as such and no person other than the person to whom this document has been addressed or delivered shall be eligible to subscribe for or purchase shares in the Fund. Shares in the Fund will not in any event be marketed to the public in Malta without the prior authorisation of the Maltese Financial Services Authority.



WisdomTree.eu  
+44 (0) 207 448 4330