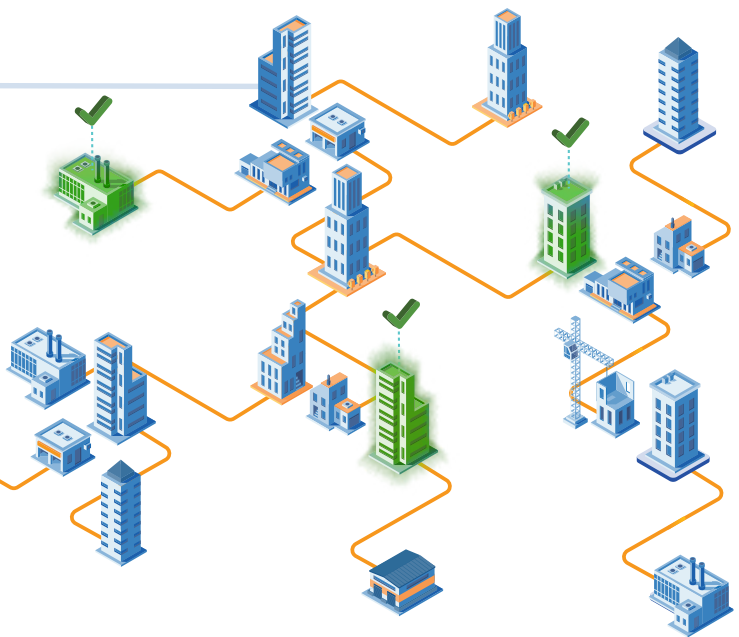


## DEFINE UNIVERSE

- 11,000+ large, mid, small and micro-cap stocks from developed and emerging markets
- Based on their initial classification, stocks are narrowed down to around 200 names
- Also added to the list are additional companies materially involved in the sector, using proprietary research



## IDENTIFY AND CLASSIFY

Companies are identified as belonging to the Artificial Intelligence value chain and classified into the following categories

### ENGAGERS

Companies whose focus is providing AI-powered products & services

#### AI-Powered Solution Providers

Vertical solution providers address needs of a specific industry, e.g. pharma, auto-makers etc. through AI-powered services

Horizontal solution providers address a need across a wide array of industries through AI powered-services

### ENHANCERS

Companies who are a prominent force in AI but whose relevant product or service is not currently a core part of their revenue

### ENABLERS

Companies who are key players in this space, with some of their core products and services enabling AI

### Component Manufacturers

Component manufacturers provide the Central Processing Units (CPUs), Graphic Processing Units (GPUs) and low-latency memory chips, including AI-tailored chips to handle the calculations and memory requirements involved in AI's crunching of huge amounts of data, as well as high-speed communications equipment and sensors required for real-time AI applications

### Platform Providers

AI has an insatiable thirst for calculation power, which might require significant capital expenditure on hardware. Therefore, even the most innovative AI companies get 'Infrastructure / Platform as a Service' from platform providers

### Algorithm Providers

AI is driven by 'cognitive algorithms'. Algorithm providers offer APIs (pre-built algorithm libraries) which can perform common cognitive functions, such as understanding text or voice, image recognition and other core AI functions



# ANALYSE AI INTENSITY

Intensity scores are assigned to each company based on:

- How core AI is to the company's product offering
- How meaningful is the AI theme in driving the company's revenue
- The company's investment in AI R&D
- Relevance of the AI solutions the company is developing



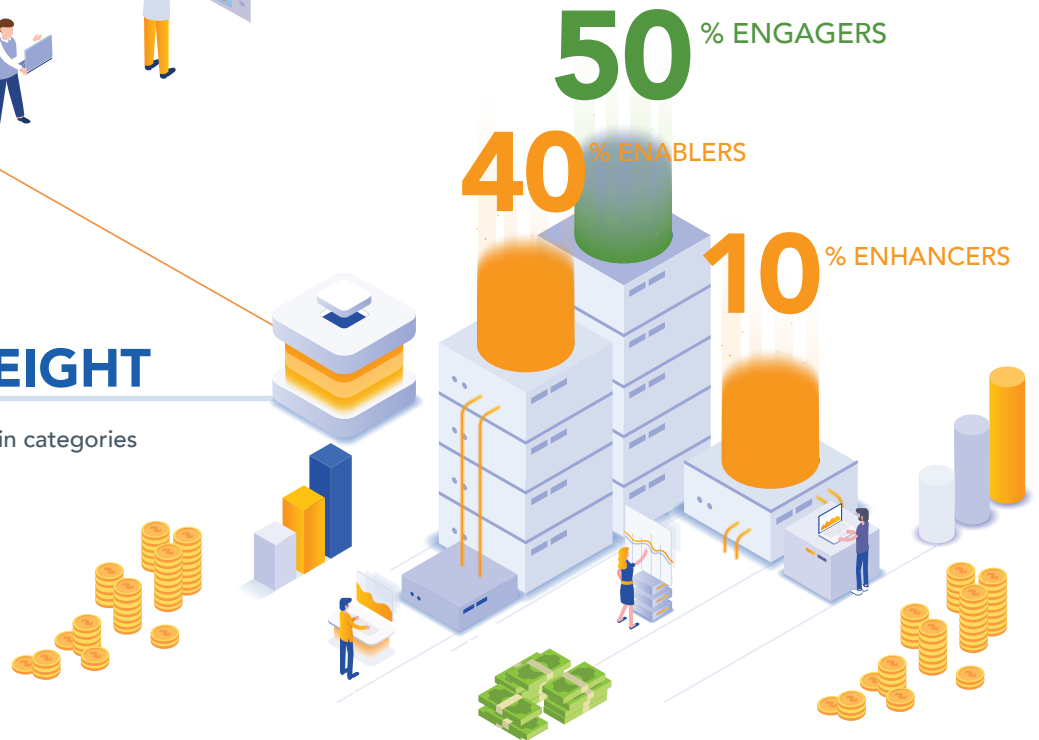
# SELECT THE TOP

Only companies with the top 15 intensity scores in each category are selected for inclusion\*



# ALLOCATE WEIGHT

Weight is allocated equally within categories



\* Prior to being selected based on their intensity score, companies are screened for the following liquidity requirements: minimum \$250m market cap, average daily volume of \$3m, free float >20%. More than one company may share the same intensity score.

# Important Information

**Communications issued in the European Economic Area (“EEA”):** This document has been issued and approved by WisdomTree Ireland Limited, which is authorised and regulated by the Central Bank of Ireland.

**Communications issued in jurisdictions outside of the EEA:** This document has been issued and approved by WisdomTree UK Limited, which is authorised and regulated by the United Kingdom Financial Conduct Authority.

WisdomTree Ireland Limited and WisdomTree UK Limited are each referred to as “WisdomTree” (as applicable). Our Conflicts of Interest Policy and Inventory are available on request.

**For professional clients only. The information contained in this document is for your general information only and is neither an offer for sale nor a solicitation of an offer to buy securities or shares. This document should not be used as the basis for any investment decision. Investments may go up or down in value and you may lose some or all of the amount invested. Past performance is not necessarily a guide to future performance. Any decision to invest should be based on the information contained in the appropriate prospectus and after seeking independent investment, tax and legal advice.**

This document is not, and under no circumstances is to be construed as, an advertisement or any other step in furtherance of a public offering of shares or securities in the United States or any province or territory thereof. Neither this document nor any copy hereof should be taken, transmitted or distributed (directly or indirectly) into the United States.

This document may contain independent market commentary prepared by WisdomTree based on publicly available information. Although WisdomTree endeavours to ensure the accuracy of the content in this document, WisdomTree does not warrant or guarantee its accuracy or correctness. Any third party data providers used to source the information in this document make no warranties or representation of any kind relating to such data. Where WisdomTree has expressed its own opinions related to product or market activity, these views may change. Neither WisdomTree, nor any affiliate, nor any of their respective officers, directors, partners, or employees accepts any liability whatsoever for any direct or consequential loss arising from any use of this document or its contents.

This document may contain forward looking statements including statements regarding current expectations or beliefs with regards to the performance of certain assets classes and/or sectors. Forward looking statements are subject to certain risks, uncertainties and assumptions. There can be no assurance that such statements will be accurate and actual results could differ materially from those anticipated in such statements. WisdomTree strongly recommends that you do not place undue reliance on these forward-looking statements.

Any historical performance included in this document may be based on back testing. Back testing is the process of evaluating an investment strategy by applying it to historical data to simulate what the performance of such strategy would have been. However, back tested performance is purely hypothetical and is provided in this document solely for informational purposes. Back tested data does not represent actual performance and should not be interpreted as an indication of actual or future performance.

